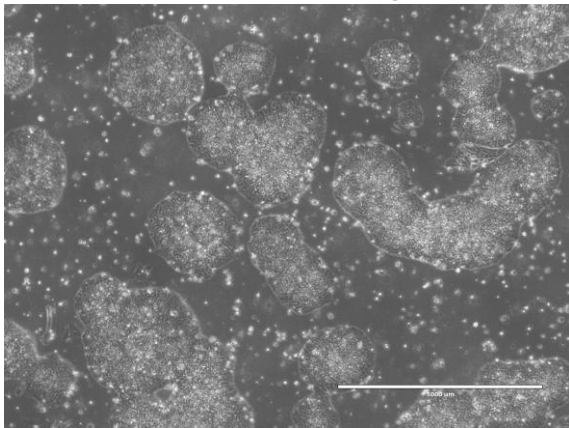
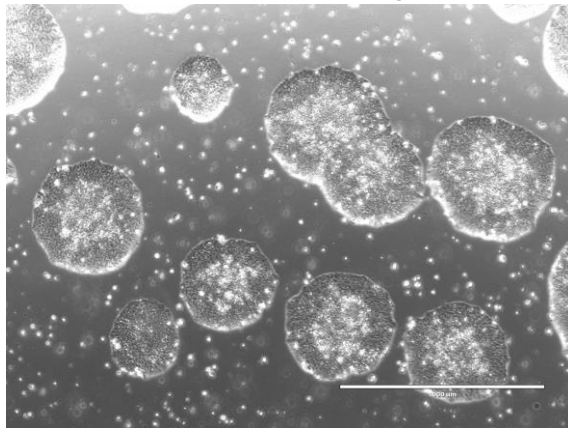


【 CiRA-j-1448 】 Morphology of iPSC colonies

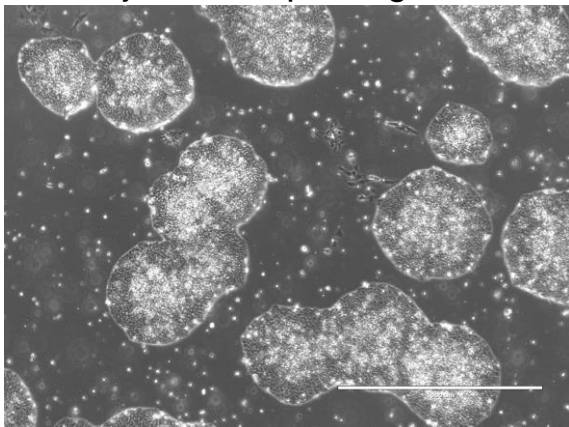
CiRA-j-1448-A: passage-3



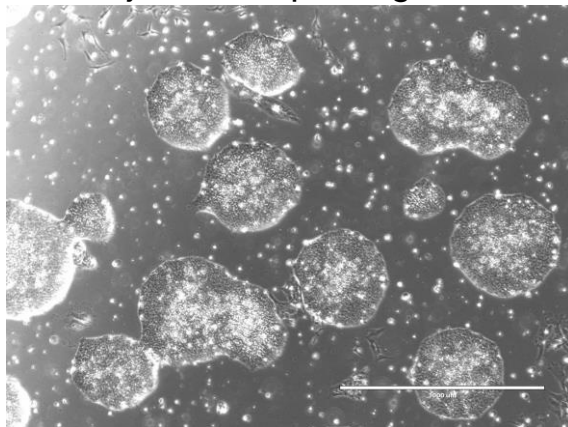
CiRA-j-1448-B: passage-3



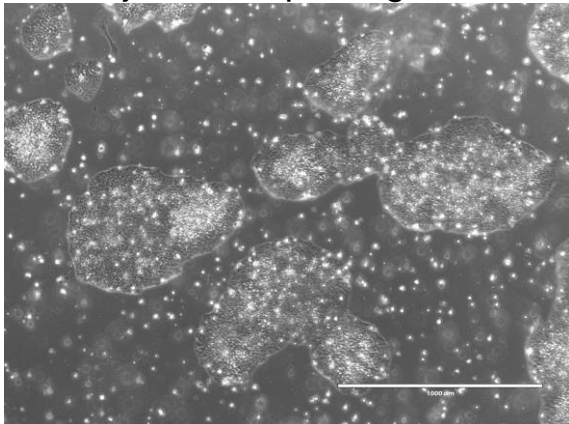
CiRA-j-1448-C: passage-3



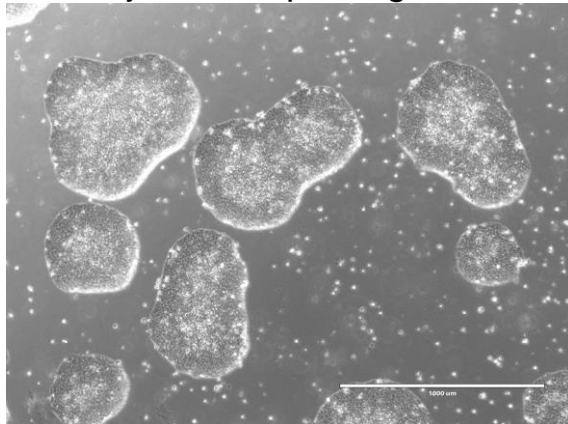
CiRA-j-1448-D: passage-3



CiRA-j-1448-E: passage-3



CiRA-j-1448-F: passage-3



(All images were captured at 4x magnification)